

# COMING SOON

*1078 W Holly Drive - Santa Claus, IN*

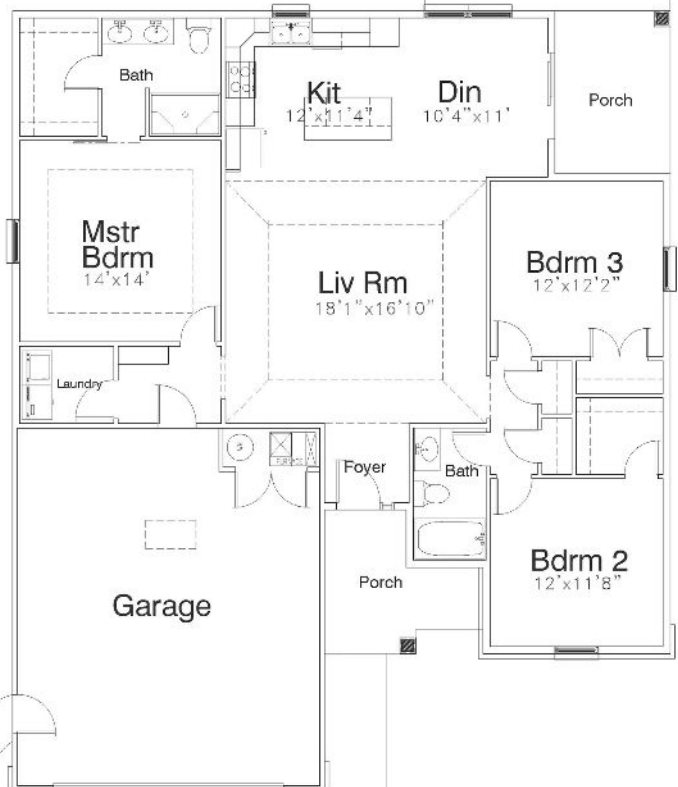
**Holly Shores Addition - Lot # 184**



**\$284,000**



**1522 SQ. FT.**



**Contact us for more information!**

Kerstiens Homes & Designs  
901 Newton Street - Jasper  
Office: 812-482-5072

Todd: 812-630-7792 Al: 812-630-4801  
[www.kerstienshomes.com](http://www.kerstienshomes.com)



**EXPERIENCE • QUALITY • DESIGN • CONVENIENCE**